
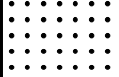

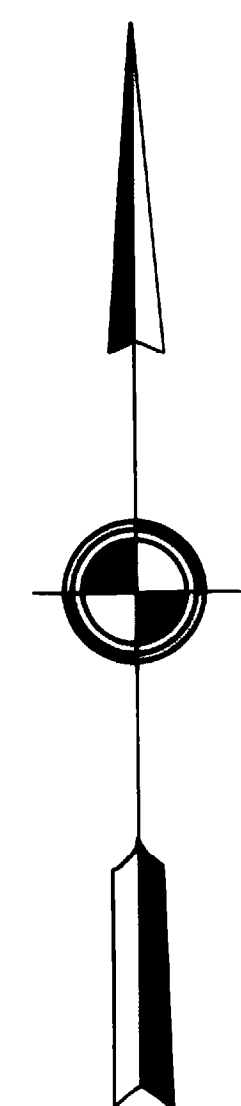
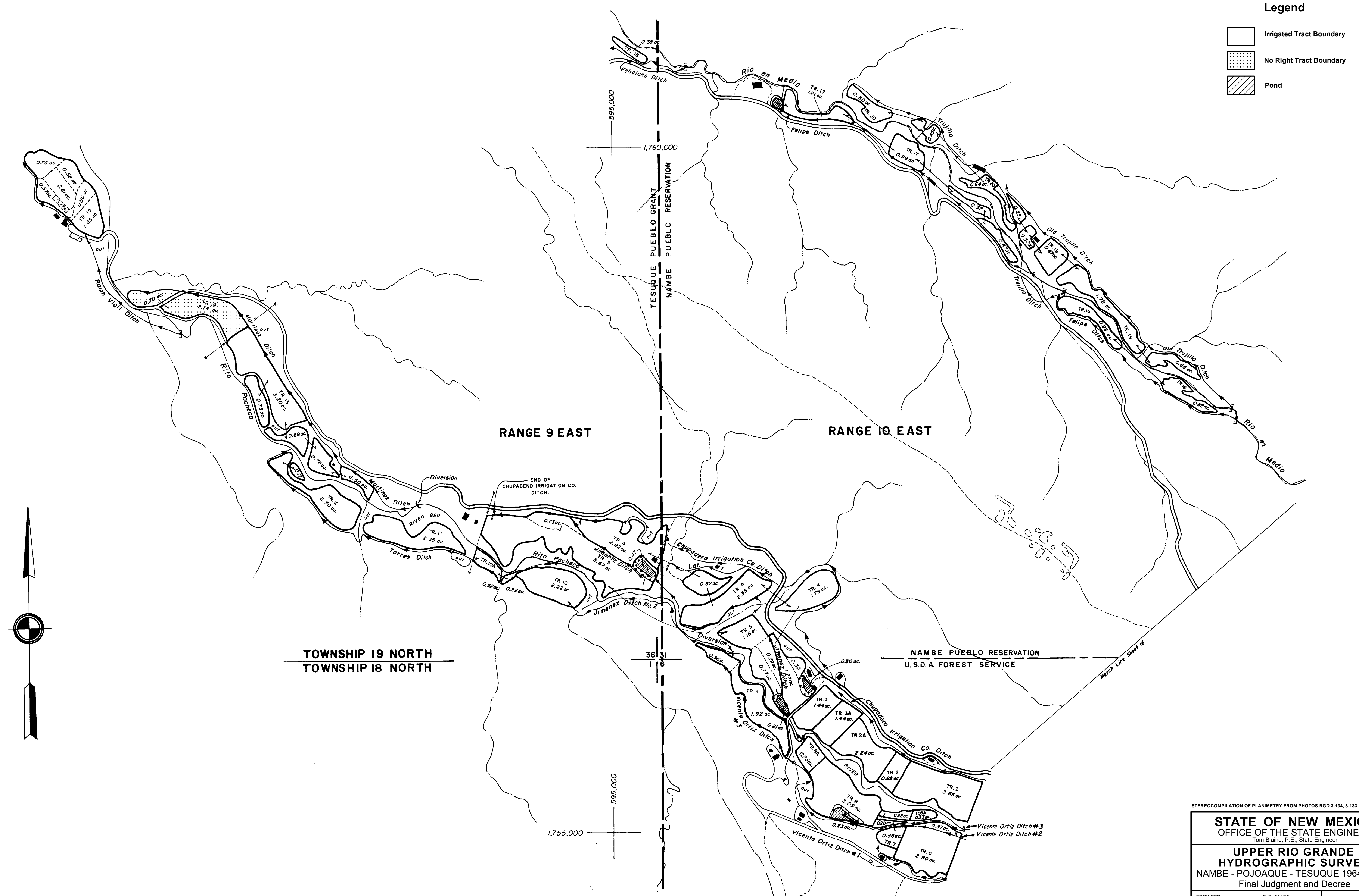


Legend

-  Irrigated Tract Boundary
-  No Right Tract Boundary
-  Pond



STEREOCOMPILATION OF PLANIMETRY FROM PHOTOS RGD 3-134, 3-133, 3-132

STATE OF NEW MEXICO
OFFICE OF THE STATE ENGINEER
Tom Blaine, P.E., State Engineer

UPPER RIO GRANDE
HYDROGRAPHIC SURVEY
NAMBE - POJOAQUE - TESUQUE 1964 - 2017
Final Judgment and Decree

ENGINEER SURVEYOR STEREOCOMPILATION TRACED BY APPROVED	F. R. ALLEN E. G. COOPER E. L. GONZALES M.H. BOYCE	SCALE 1" = 300' SHEET NO. 15
--	---	---------------------------------